

STEERING ANGLE SENSOR REMOVAL

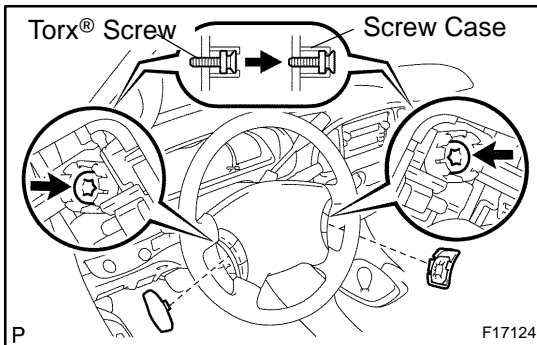
BR1YG-01

1. REMOVE STEERING WHEEL PAD

NOTICE:

If the airbag connector is disconnected with the ignition switch in ACC or ON, DTCs will be recorded.

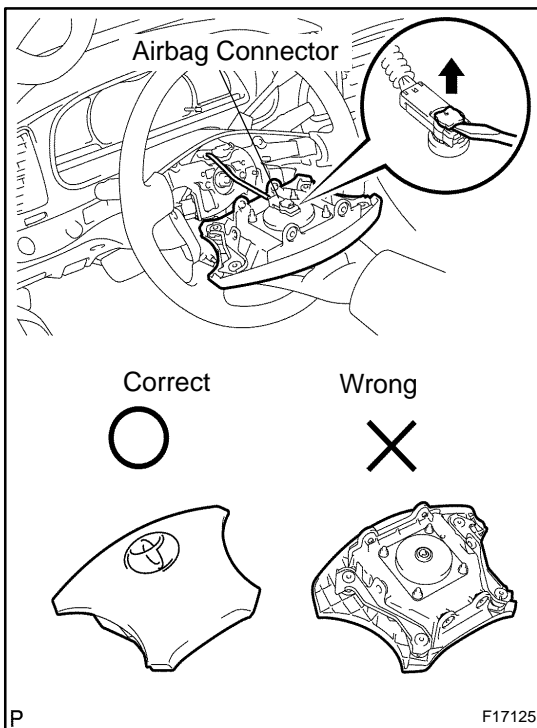
(a) Disconnect battery negative terminal.



- (b) Place the front wheels facing straight ahead.
 (c) Remove the steering wheel lower No. 3 cover.
 (d) Remove the steering wheel lower No. 2 cover.
 (e) Using a torx® socket wrench (T30), loosen the 2 torx® screws.

HINT:

Loosen the screw until the groove along the screw circumference catches on the screw case.



- (f) Pull out the wheel pad from the steering wheel.
 (g) Using a screwdriver, disconnect the airbag connector.

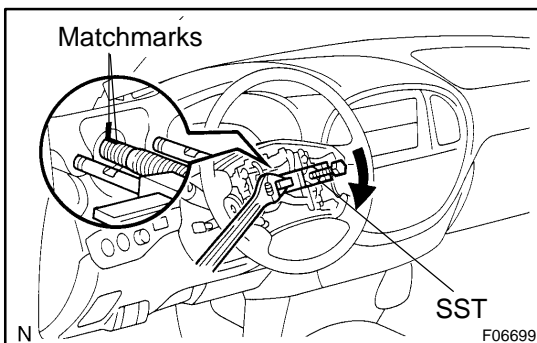
CAUTION:

- When storing the steering wheel pad, keep the upper surface of the pad facing upward.
- Never disassemble the steering wheel pad.

NOTICE:

When removing the steering wheel pad, take care not to pull the airbag wire harness.

- (h) Disconnect the horn connector and remove the steering wheel pad.

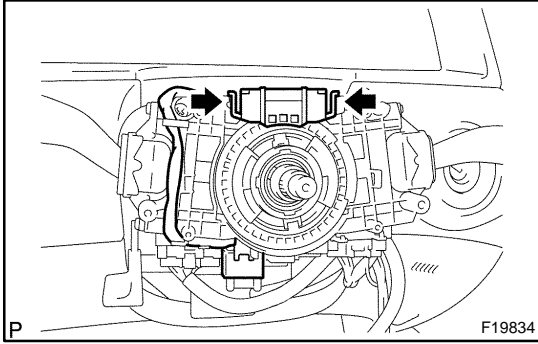


2. REMOVE STEERING WHEEL

- (a) Remove the steering wheel set nut.
 (b) Place matchmarks on the steering wheel and main shaft assembly.
 (c) Using SST, remove the wheel.
 SST 09950-50013 (09951-05010, 09952-05010, 09953-05020, 09954-05021)

3. REMOVE SPIRAL CABLE

- (a) Disconnect the 2 connectors.
 (b) Remove the 4 screws and remove the spiral cable.

**4. REMOVE STEERING ANGLE SENSOR**

- (a) Disconnect the connector.
- (b) While pressing the 2 claws, remove the steering sensor.